



SINGYEONGJU UNIVERSITY

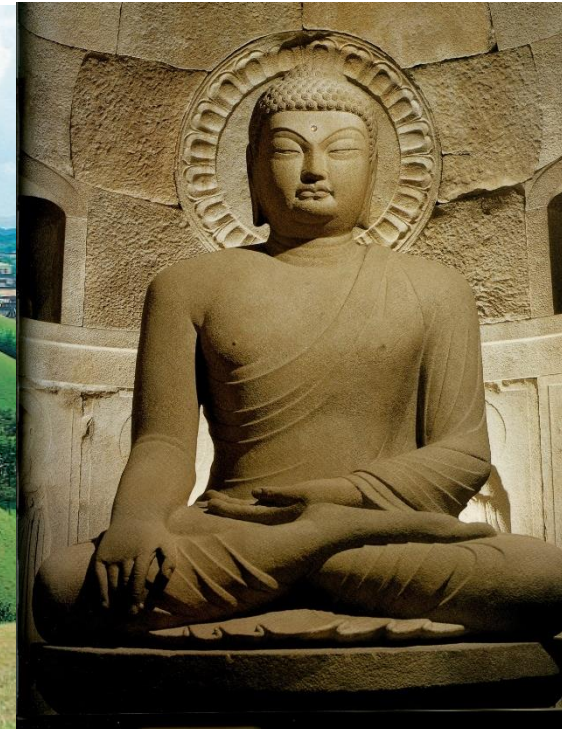
OFFICE OF INTERNATIONAL AFFAIRS





Singyeongju University is located in Gyeongju City, Gyeongsangbuk-do, Republic of Korea. Gyeongju is a city with a deep history and rich culture, having served as the capital of the **Silla Kingdom** for approximately one thousand years, beginning in 57 BC.

In the downtown area of Gyeongju, royal tombs and residential districts harmonize naturally. Furthermore, due to construction restrictions under the **Cultural Heritage Protection Act**, one can enjoy a peaceful, low-lying skyline characterized by the absence of high-rise buildings. Additionally, Gyeongju is home to Korea's representative Buddhist heritage sites designated as UNESCO World Heritage Sites, such as **Bulguksa Temple** and **Seokguram Grotto**. It is a city where one can truly experience the roots of traditional Korean culture.





"Why Singyeongju University?"

- ▶ The Historical Culture of the Thousand-Year Ancient Capital Gyeongju and a Global Learning Environment
- ▶ Reasonable Tuition and Low Cost of Living
- ▶ Abundant Local Jobs and High Employment Potential"
- ▶ A Safe and Pleasant Living Environment
- ▶ Practical International Study that Connects Academics Employment and Settlement



"Study in Korea: Starting with reasonable costs and leading all the way to employment and settlement."

Singyeongju University is not simply a place to earn a degree; it is a university where you can directly experience the roots of Korean culture and practically prepare for your future—from academics to employment and permanent settlement

Why is SINGYEONGJU University strong in studying abroad??

Singyeongju University is connected to the Gyeongju, Pohang, and Ulsan industrial areas through practical education,

It is a university that increases the possibility of employment and settlement of foreign students.

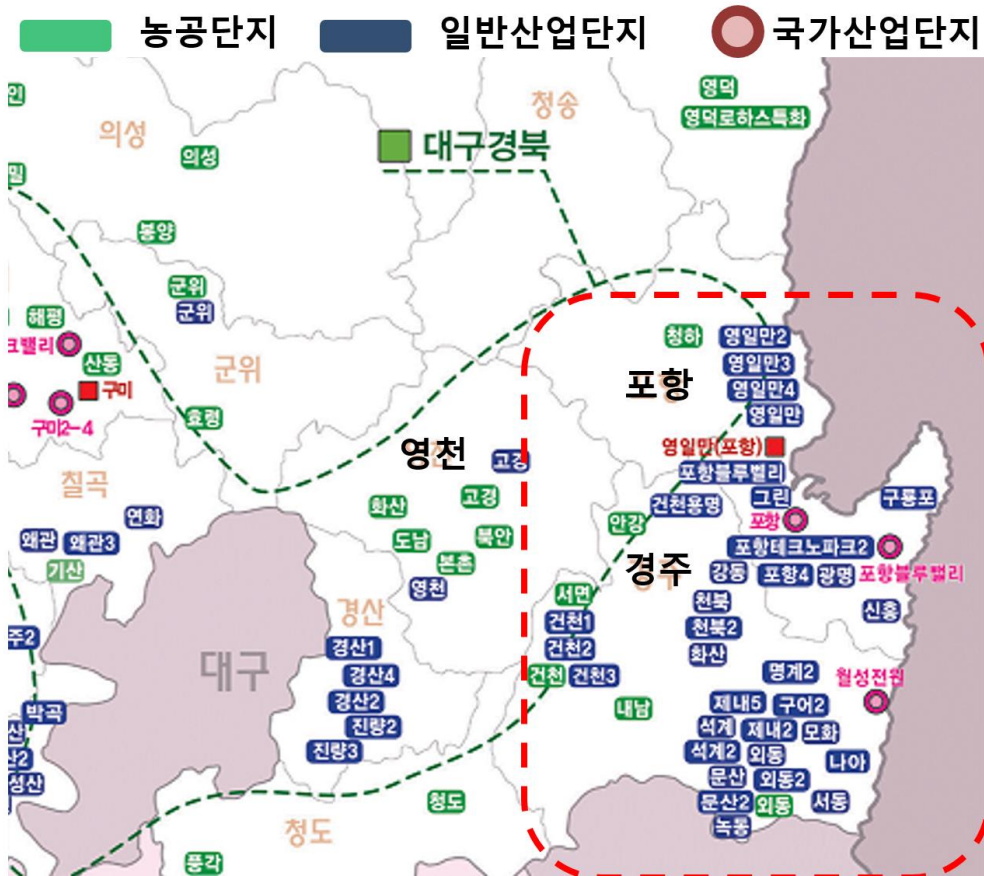
Status of Regional Industries

Distribution of a number of industrial complexes in Gyeongju, Pohang, and Ulsan industries (135)

It can be linked to various industries such as manufacturing, AI, energy, automobiles, batteries, cultural tourism, agricultural and livestock

Expansion of employment opportunities for foreign students due to increased demand for manpower at local industrial sites

Regional industrial environment with high demand for practical global talents who can speak foreign languages



SK-Amazon Builds Northeast Asia AI (Artificial Intelligence) Hub in Ulsan
SK Group – Amazon Web Services (AWS)

A total of 7 trillion won will be invested in the Mipo National Industrial Complex in Ulsan to build an AI-only data center with a power capacity of more than 100 megawatts (about 60,000 GPUs will be put in). Beyond simple data storage facilities, it will function as an AI development and service hub covering the entire Northeast Asia

신경주대학교 글로벌 교육 프로그램

Global Education Program at SingyeongjuUniversity

新庆州大学国际教育项目

Information on the International Student Program at Singyeongju University

Since its establishment as the Korea Tourism University in 1987, Singyeongju University has been selected as the 'Best Tourism Specialized University' several times over the past few decades. Currently, it provides specialized education focusing on promising future fields such as tourism management, global culture, health and welfare, and energy convergence.

외국인 유학생 과정	비자
한국어 및 영어 연수과정(연수기간 6개월 - 2년)	D-4-1 / D-4-7
학부과정(신입학 및 편입학) [한국어트랙 · 영어트랙 · 이중언어과정]	D-2-2
석사과정 [한국어트랙 · 영어트랙 · 이중언어과정]	D-2-3
박사과정	D-2-4
연구과정	D-2-5
교환학생과정	D-2-6
단기유학생과정	D-2-8

2026 Global Language Institute

1. Korean Language School
2. English For Academic Purposes (EAP)



한국어학당(D-4-1)

TOPIK 향상부터 학위과정 진학까지 연결되는 집중형 한국어과정 **TOPIK 집중 + 진학연결**

- Customized class operation by classification by level
- Korean language education with balanced listening, speaking, reading, and writing
- Systematic learning of TOPIK level 3-4 goals and support application for the Korean language proficiency test
- Strengthen the sense of practice by running regular mock tests
- Korean Cultural Experience and Corporate Exploration Program
- Consultation and linkage support for undergraduate and graduate school entrance

Singyeongju University's Korean Language Institute supports not only improving Korean language skills, but also adapting to Korean society and entering a degree program

빠르게 배우고, 확실하게 진학하다!

Learn Korean Faster, Enter Your Degree Program Sooner

English Language Training Course (D-4-7)

A practical course that improves English proficiency and leads to enrollment in the English Track""Practical IELTS Preparation + English Track Connection"

- IELTS 5.5 Customized intensive training for early achievement
- Dedicated Lab operation for computer-based IELTS tests
- Strengthen your sense of practice through weekly mock tests
- Operation of Korean Life Adaptation Program
- Strengthen basic academic competency for undergraduate English track
- Korean Cultural Experience and Corporate Exploration Program

The English training course at Singyeongju University is a practical program that prepares for both improving English proficiency and preparing for college entrance. In particular, we run a dedicated lab for computer-based IELTS test preparation and conduct a mock test every week to help you become familiar with the actual test environment.

Intensive English Training Course Reflecting Computer-Based IELTS Practical Environment!

학기 일정

- *Eligibility:** Foreigners who wish to learn Korean and English (High school graduates or higher)
- *Learning Levels:** Korean Language Institute Levels 1–6 / English Language Program Levels 1–2
- *Class Composition:** Beginner, Intermediate, Advanced (Approximately 20 students per class)
- *Class Hours:***
 - * 10 weeks per semester
 - * 5 days a week (Mon–Fri), 9:00 AM – 12:00 PM
 - * 3 hours of class per day (Total 150 hours, including 10 hours of cultural experience classes)

Term	Period
Spring Term	March 3, 2026 - May 12, 2026
Summer Term	June 1, 2026 - August 10, 2026
Fall Term	August 31, 2026 - November 12, 2026
Winter Term	November 30, 2026 - January 18, 2027

Curriculum and educational expenses

한국어학당(D-4-1)

Level 1	<ul style="list-style-type: none"> 한국어 자음, 모음과 발음 기본 어휘와 문법 간단한 일상 회화
Level 2	<ul style="list-style-type: none"> 자주 사용하는 어휘, 조사, 접속사 간단한 대화, 글, 편지, 안내문
Level 3	<ul style="list-style-type: none"> 다양한 사회환경에서의 회화능력 한국어 말하기와 쓰기의 특징 친숙한 주제에 대해 글쓰기
Level 4	<ul style="list-style-type: none"> 추상어와 개념적인 어휘 논리적인 글쓰기 복잡한 상황을 설명하는데 필요한 문법 기술
Level 5	<ul style="list-style-type: none"> 정치, 경제, 사회, 문화 관련 독해 어휘 구축 : 관용구, 옛 속담, 저널리즘 어휘 설득력 있는 글 쓰기
Level 6	<ul style="list-style-type: none"> 어휘력 향상 : 자주 사용되는 외래어 및 전문 어휘 공식적인 글쓰기 말하기와 토론

영어연수과정(D-4-7)

ENTRY LEVELS	➔	TARGET LEVEL AFTER COMPLETION
Level 1 (IELTS 4.0 to 4.5 Level) Level 2 (IELTS 4.5 to 5 Level)		Targeting 5.0 - 7.0

Operating by dividing levels into Level 1 (IELTS 4 to 4.5) and Level 2 (IELTS 4.5 to 5) to match students' levels, and the class capacity is limited to 30 students or less.

PERIOD	TIME	MON	TUE	WED	THU	FRI
1st Period	09:00-09:50	Reading	Writing	Reading	Writing	IELTS Mock Test
2nd Period	10:00-10:50	Vocabulary	Grammar	Vocabulary	Grammar	
3rd Period	11:00-11:50	Listening	Speaking & Pronunciation	Listening	Speaking & Pronunciation	

Application fee: 150,000 won (only new students paid, non-refundable)

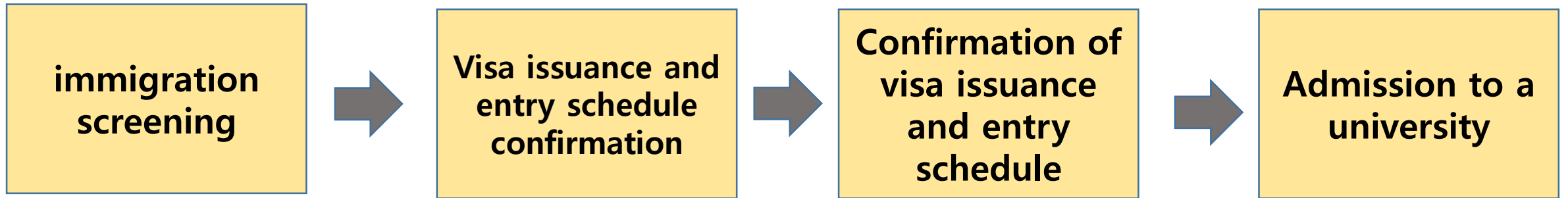
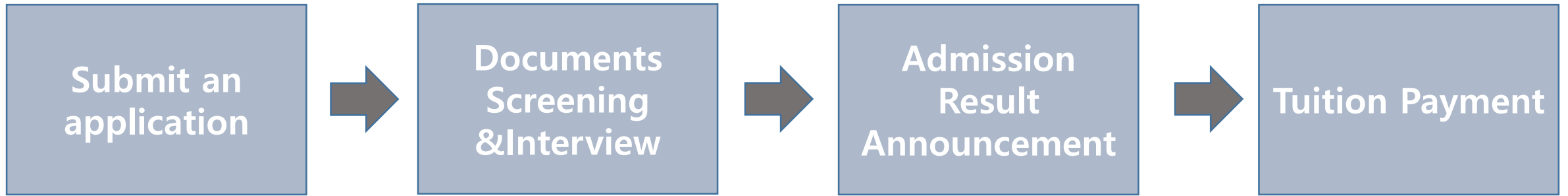
Insurance premium: 150,000 won (6 months, mandatory health insurance after 6 months)

Tuition fee (1 year): KRW 5,200,000 (KRW 1,300,000 per session)

Cultural experience fee: 200,000 won

Operating fee: 200,000 won (external registration card issuance fee, etc.)

Application procedures



○ 한국어를 처음 배우는 학생은 배치고사 시험을 치르지 않고 초급반에서 자동시작합니다.

Special recruitment guide (undergraduate/graduate) for foreign students (new students and transferred) for the second semester of 2026 (undergraduate/graduate school)



2026.04.01

Recruitment department and quota

모집 학과 및 정원

招生专业及招生名额

Department of recruitment for new and convenient admission (recommended major)

Undergraduate	Affiliation	모집단위	모집인원	한국어트랙	영어트랙	편입
	Humanities and social Sciences	Department of Global Convergence (Foreigners' Department)	67명	●	●	● 2학년
		Department of Tourism Business Management	10명	●	●	● 2·3학년
		Global Department of Culinary Medicine	20명	●		
Graduate						

구분	과정	계열	학과	전공
Graduate School of Global Smart Industrial Management	Master's degree	Humanities and social Sciences	Department of Global Business Management	International management major and innovative start-up management major Major in Sports Management and International Trade Management K Beauty Management Major and Chinese Culture Management Major DX/AX major and mobility major Renewable Energy Major
Graduate School of Global Smart Industrial Management	Master's degree	Art, Music and Physical education	Department of Art	music major, dance major

※ If there are more than 20 people to recruit, a bilingual course is opened and operated
 ※ The Department of Global Business Management can be operated for a one-year course (4 semesters: 2 regular semesters + summer semesters + winter semesters)

www.sgu.ac.kr

2026

신경주대학교

신입생 모집안내

SINGYEONGJU UNIVERSITY

Humanities & Social Sciences

Tourism Business Management

Social Welfare

Funeral Culture Industry

Global Convergence

AI Convergence Media Entrepreneurship

Global Culinary Arts

Arts & Physical Education

Sports Leader Training

Musical Instrument Making

K-Beauty Arts

Engineering

AI Electric Vehicle

Industrial Safety and Health

Natural Sciences

Dental Hygiene

Radiology

Equine (Horse) Industry

Smart Farm Agricultural & Livestock Industry

Companion Animals

Nursing



College/School	Department/Division	Content
인문사회계열 College of Humanities · Social Sciences	관광사업경영학과 [영어트랙 운영] Tourism Business Management	As Korea's first tourism-specialized university, it trains professional talents to lead the global tourism business through training centered on cultural tourism and tourism industry practice. It is a curriculum linking tourism management, cultural tourism contents, and international tourism industry practice, and aims to find employment and start businesses in Korea and global tourism.
	사회복지학과 Social Welfare	We will train future social welfare experts who respond to the aging and multicultural society. Based on Korea's advanced welfare system and field-oriented education, we support the acquisition of social worker qualification and advancement into the international welfare field..
	장례문화산업학과 Funeral Culture and Industry	It is the best four-year funeral department in Korea and operates a specialized curriculum covering the funeral, memorial, and well-dying industries. Based on the funeral culture and industrial system in Korea, we train funeral industry professionals and global funeral service experts.
	글로벌융합학부 [영어트랙 운영] Global Convergence Studies	It is a global convergence department tailored to international students that combines Korean language education with major and career connection. It integrates basic major, practical competency, and Korean social adaptation education to provide a practical curriculum leading to Korean employment and global career.
	AI융합미디어창업학과 Department of AI Convergence Media & Entrepreneurship	It is a practical-oriented department that combines AI technology, media content, and start-up education. It aims to enter the media and content industry and global creators and start-ups by strengthening the production of video, photography, and media content and AI-based start-up capabilities together.
	글로벌외식조리학과 Department of Global Culinary Arts & Food Service Management	Focusing on K-Food, various cooking practices such as Korean food, Western, Oriental, hotel cooking, and bakery, and restaurant management theories will be taught together. We will train internationally competitive restaurant and cooking experts with practical cooking skills and creative menu development capabilities necessary for the global food service industry.



College/School

Department/Division

Content

자연과학계열
College of Natural Sciences

치위생학과
Dental Hygiene

It is a department that trains professional oral health care personnel, and strengthens practical skills through clinical training centered on dental practice. It aims to cultivate professional dental hygienists who can work in dental hospitals, general hospitals, and oral health institutions.

방사선학과
Radiology

It is a department that trains radiology professionals in line with the era of advanced medical technology. Through the latest medical imaging equipment practice and field-oriented training, we train professional medical technicians who can be used immediately in hospitals and medical institutions.

말산업학과
Equine Studies

It is a specialized department that encompasses the entire horse industry, including horse management, horse riding, and horse industry management. Based on leadership and personality-centered education, we will cultivate professional talents who can enter the horse industry, sports, and leisure industries at home and abroad.

스마트팜농축산업학과
Smart Farm Agriculture

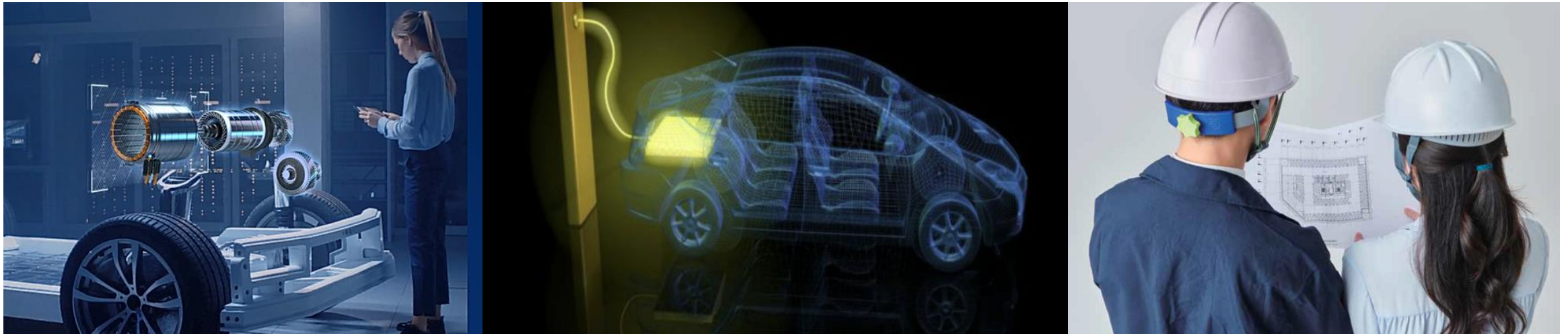
It is a department that trains smart agricultural and livestock specialists in line with the era of the 4th industrial revolution. It fosters global experts in the future agricultural field through ICT-based smart farm technology, data agriculture, and education on sustainable agricultural and livestock systems.

반려동물학과
Companion Animal Science

It provides hands-on training tailored to rapidly growing pet industry trends. Through training in pet management, training, welfare, and industry as a whole, we train professional pet industry personnel and talented people entering the global pet industry.

간호학과
Nursing

It operates practice-oriented training in connection with various clinical practice institutions such as university hospitals and general hospitals. It aims to cultivate clinical-oriented professional nurses with professional nursing knowledge and practical competency.



College/School	Department/Division	Content
공학계열 College of Engineering	AI 전기자동차학과 AI-Driven Electric Mobility	It is a high-tech engineering department that combines AI technology with electric vehicle and future mobility. Through theories and practice on electric vehicles, autonomous driving, batteries, and smart mobility systems, we train practical AI engineers who will lead the global electric vehicle and mobility industry. After graduation, we can enter the corporate and global industries related to automobiles, batteries, and smart mobility
	산업안전보건학과 Department of Occupational Safety and Health	It is a department that trains professional manpower responsible for the safety and health of industrial sites. Through industrial safety, work environment management, theory and field-oriented education in the fields of health and environment, we train industrial safety and health experts required in the local community and global industrial sites. It can advance into the safety and health fields of manufacturing, construction, public institutions, and global companies.



College/School	Department/Division	Content
예·체능계열 College of Arts and Physical Education	스포츠리더양성학과 Sports Leadership	It is a department that trains professional sports leaders and sports industry leaders through systematic and scientific education on leisure and sports management. It aims to advance into domestic and foreign sports institutions, leisure and health industries, and sports education through sports training, teaching methods, sports management, and on-the-job training.
	악기제작학과 Musical Instrument Making	It is a specialized department that specializes in traditional and modern musical instrument production and repair and restoration technology. We train professional musical instrument production and technician personnel who can operate in the entire cultural industry through string instrument production, musical instrument repair and restoration, and practical training in the music industry. Based on stable professional skills, it is possible to enter the domestic and foreign music, performance, and cultural industries.
	K-뷰티예술학과 K-Beauty Arts	Focusing on K-beauty, we provide practical beauty art education such as makeup, hair, and skin beauty. It aims to cultivate professional technology-based beauty art talents that are not replaced even in the era of AI and automation, and to enter the beauty industry, entertainment, and global K-beauty market.

중국 유학생 특화 맞춤형 프로그램

1년 학위 프로그램(D-2-2) : 3+1 학위과정

After graduating from a three-year university in China, you can get a Korean bachelor's degree in a year
an efficient transfer program

차별화!

동국대 = 학위 중심

신경주대 = 취업 중심



3+1 학위과정(4학년 편입)

1년 학위 + 취업 + 비자까지 연결되는 실전형 유학 과정

1 중국 3년제 대학 졸업자 대상

2 한국 대학 4학년으로 편입

3 1년간 학점 이수 후 학사학위 취득 가능

- 기초과정 반복 없이 전공 중심 학업 설계

4 비자 & 진로 : 졸업 후 D-10(구직비자) → E-7(취업비자) 연계 가능

- 졸업 전 희망자에 한해 현장실습(인턴십) 연계
- 경주·포항·울산 산업단지 기업 취업 지원

시간과 비용을 줄이면서 학위를 빠르게 높일 수 있는 실속형 유학 과정

빠른 학위 취득과 진학, 취업까지 함께 준비할 수 있는 과정

학부 졸업 후 석사과정(MBA 등) 진학 연계 가능

1년 학위 + 취업까지 연결되는 가장 효율적인 유학 과정

중국 유학생 특화 맞춤형 프로그램 공학 프로그램(D-2-2)

“一边学习一边合法工作，毕业后直接实习 → 求职签证 → 就业 → 长期居留。”
(공부하면서 합법적으로 일하고, 졸업 후 실습 → 구직비자 → 취업 → 장기체류)
(Work legally while studying, practice after graduation → Job visa → Employment → Long stay)

“韩国制造业 + AI中心 = 中国学生就业机会最多的地区。”
(한국 제조업 + AI 센터 = 중국 학생에게 취업 기회가 가장 많은 지역)
Korea Manufacturing + AI Center = The region with the most job opportunities
for Chinese students

“实习 = 最重要的 D-10 申请材料”
(인턴 경험은 D-10 비자 신청에서 가장 핵심 자료이다)



인문사회계열	관광사업경영학과 사회복지학과 장례문화산업학과 글로벌융합학부 AI융합미디어창업학과 글로벌외식조리학과
예·체능계열	스포츠리더양성학과 악기제작학과 K뷰티예술학과
공학계열	AI전기자동차학과 산업안전보건학과
자연과학계열	치위생학과 방사선학과 말산업학과 스마트팜농축산업학과 반려동물학과 간호학과

1 TOPIK 소지 학생 : 학부(D-2-2) 재학 중 시간제 취업(아르바이트) 연계

- TOPIK 3-4급 → **주중 25시간** + 주말 및 방학 무제한 근로 가능
- TOPIK 4급 이상 → 제조업 등 직무 제한 없이 취업 가능

2 졸업 후 취업 연계 : 4학년 인턴십(현장실습) - D-10 비자 포트폴리오 확보

- 신경주대학교 : MOU 체결 지역 산업체(경주, 포항, 울산 제조업 / AI·데이터센터 등)와 연계
- 4학년 때 **현장실습(인턴십)** 배정 → D-10 구직비자 신청 시 **가장 중요한 증빙자료**
- 전공과 직무 일치 시 **D-10 허가율 상승**

비자 전환
D-2-2(정규과정) 비자로 4년 수학하며 합법 근로 →
D-10(구직비자, 최대 3년 체류) →
E-7(취업비자, 1~2년 후) →
F-2-7(영주권형 점수제 장기 체류비자)

E-7 취업분야 경주, 포항, 울산에는 공업 단지와 AI데이터 센터(구축 중)가 밀집해서 다양한 취업 루트 존재
 특히, 제조업(자동차 부품, 배터리·전기차 산업, 철강·소재 등) 분야가 집중되어 있음[공학/자연과학 계열 유리!]

“一边学习一边合法工作，毕业后直接实习 → 求职签证 → 就业 → 长期居留。”

중국 유학생 특화 맞춤형 프로그램
교환학생 프로그램(D-2-6)

来韩国半年体验语言与文化，之后可直接衔接本科三年级

6개월 한국 생활·어학·학점인정

6 Months of Korean Life, Language, and Credit Recognition



교환학생(D-2-6) 프로그램

(연수기간은 중국대학과 협의 후 조정 研修期限可根据与中国高校的协商进行调整)

1 TOPIK 소지 학생(3학년으로 체류 가능)

- TOPIK 소지 시, 희망 전공으로 **3학년 1학기**로 바로 진학하여 수업 참여

2 TOPIK 미소지 학생(어학연수 + 한국문화 체험)

- 어학당 6개월 연수 후, TOPIK 취득 시 → **3학년 2학기**부터 희망 전공 수업 참여 가능
- 어학당 6개월 연수 후, TOPIK 미취득 시 → 학부 **이중언어과정(Bilingual Track)** 으로 수업 진행

3 어학연수비용 : 300만원(6개월)

비자 전환

D-2-6(교환학생) 비자로 6개월 연수 후 →
D-2-2(정규과정)로 체류 자격 변경 가능



기숙사 비용 : 120만원(2학기, 약 6개월)

장학혜택

자매대학과 별도 협의 가능



M.

B.

A.

석사학위(1년, 이중언어과정)
글로벌비즈니스경영학과
Master of Global Business
Administration(M.B.A)



왜 1년짜리 MBA가 중국 학생들에게 가장 인기가 있을까?

1. 1년 만에 석사 학위 취득(시간절약)
2. 중국 귀국 후 경력·연봉 상승 유리
3. 한국 취업 시 E-7비자 신청 용이

Why a year MBA at Singyeongju University?

1년 만에 완성하는 실무형 MBA : 글로벌비즈니스경영학과(M.B.A.)

MBA: Global Business Management Department

- ✓ Master of Business Administration in 1 year
- ✓ High efficiency master's program that saves time and money
- ✓ Strengthen career competitiveness after Korean employment or returning to China
- ✓ Can operate bilingual based on Korean and Chinese

Beyond earning a degree in ✓, connecting employment and practical competencies

The MBA of Singyeongju University is a course that can quickly achieve a degree and grow into a working-level global talent

What will you learn?

Convergence MBA to Understand Korean and Chinese Businesses Together

- ✓ International business, AI data management, ESG and start-up, and cultural business convergence education
- ✓ Curriculum to understand the business environment of Korea and China at the same time
- ✓ Practical class and project-type learning operation
- ✓ Business Korean Language Link Learning Support
- ✓ Strengthen practical problem-solving capabilities through field-oriented training

It's not just a theory-oriented MBA, it's a practical management curriculum that connects to industrial sites.

Where do you connect after graduation?

MBA Not Finishing in Degree – Connecting to Employment and Career Growth

- ✓ On-site education in connection with Gyeongju, Pohang, and Ulsan industrial zones
- ✓ Manufacturing, AI, energy, automobiles, batteries, tourism and service employment can be linked.
- ✓ Industrial environment with high demand for Chinese-speaking global talents
- ✓ E-7 visa preparation for Korean employment
- ✓ Strengthen career and salary competitiveness after returning to China

A year later, you'll find that the working-level global business talent that Korean and Chinese companies need together

등록금 및 장학금
Tuition and Scholarships
学费及奖学金

등록금 소개 (学费介绍)

Introduction of tuition fees

Undergraduate

Affiliation		Tuition fee(KRW)
Humanities and Social sciences	Department of Global Convergence (Department of Foreign Affairs)	3,353,000
	Department of Tourism Business Management	
	Global Department of Culinary Medicine	
Engineering		4,123,000
Nature		4,123,000
Health		4,271,000
Entertainment		4,661,000
Physical ability		4,123,000

※ The above amount is based on the first semester of 2026, and additional fees may be incurred due to changes in our school's policy even after payment of tuition fees

등록금 소개 (学费介绍)

Introduction of tuition fees

Graduate

대학원	Affiliation	입학금	수업료	등록금(원)	
Graduate School of Specialty Global Smart Industrial Management (Master)	Humanities and Social sciences	900,000	3,600,000	4,500,000	
	art, music and physical education		4,200,000	5,100,000	
General graduate school (Master)	Humanities and Social sciences	900,000	3,600,000	4,500,000	
	Engineering		4,900,000	5,800,000	
	Nature		4,700,000	5,600,000	
	General Graduate School (Doctor)		Humanities and Social sciences	4,100,000	5,000,000
	Engineering		5,500,000	6,400,000	
	Nature	5,200,000	6,100,000		

- ※ Applicants for bilingual courses and conditional admissions for general courses must separately complete Korean language education courses operated by our school, and must pay the applicable tuition fee separately.
- ※ Admissions for bilingual courses (Global Business Management Department) must pay an additional 800,000 won for interpretation each semester. However, excluding those admitted to the Korean track
- ※ Admission fee is charged only for the first semester of registration

등록금 소개 (学费介绍)

대학원(석사과정 1년, 이중언어과정) : 글로벌비즈니스경영학과

학기	입학금	통역료	수업료	총 납부금(원)
1학기	900,000	800,000	4,500,000	6,200,000
여름학기	-	800,000	4,500,000	5,300,000
2학기	-	800,000	4,500,000	5,300,000
겨울학기	-	800,000	4,500,000	5,300,000

- The admission fee is only charged during the first semester of enrollment.
- Korean language training is a mandatory requirement before and after admission; if completion criteria are not met, additional training must be completed.
- Korean language training fees are charged separately.

장학금 제도 scholarship system (奨学金制度)

Scholarship for admission to new and transferred students: Undergraduate

장학명		수혜자격	장학금액
입학 장학금			
외국인우수학생 장학금	A	TOPIK 5급 이상, IELTS 6.5 이상	수업료 100%
	B	TOPIK 4급, IELTS 6.0 이상	수업료 70%
	C	TOPIK 3급, IELTS 5.5 이상	수업료 50%
SGU-어학당연계장학금		글로벌어학당 수료 후 학부 진학자	수업료 50%
SGU-지역고교연계장학금		지역 내 고등학교 졸업 외국인유학생	수업료 100%
유학생 성적 장학금			
SGU-성적장학금		직전학기 평점 4.0 이상	수업료 50%
SGU-성적장학금		직전학기 평점 3.0 이상	수업료 30%

- ※ 지속 수혜 요건: 직전 학기 취득학점이 15학점 이상이어야 하며, 직전 학기의 평점평균이 3.0 미만이거나 F학점이 2과목 이상이거나 징계를 받은 학생은 장학금 수혜 대상에서 제외
- ※ 불법취업으로 적발된 학생 및 무단결석 다수자, 기숙사 생활규정 위반자는 장학금 수혜 대상에서 즉시 제외
- ※ 장학금 제도는 학교의 규정과 조정절차에 따라 변경될 수 있으며, 변경 후 기준시점에 따라 적용됨
- ※ 입학 시 총장이 정함에 따라 특별 실생활지원금을 지급할 수 있으며, 이는 장학금 항목에 포함되지 않음

장학금 제도 (奨学金制度)

신입생 입학장학금 : 대학원

장학금 종류		기준(한국어트랙·영어트랙)	감면율/금액	적용기간	과정구분
외국인유학생 장학금 (Language Excellence Scholarship)	A	외국인학생으로 TOPIK 6급 또는 IELTS 7.0이상인 자	수업료의 40%	입학·재학 학기중 1회 한정	석·박사 학위과정
	B	외국인학생으로 TOPIK 5급 또는 IELTS 6.5이상인 자	수업료의 30%	입학·재학 학기중 1회 한정	석·박사 학위과정
	C	외국인학생으로 TOPIK 4급 또는 IELTS 6.0이상인 자	수업료의 20%	입학·재학 학기중 1회 한정	석·박사 학위과정
	D	외국인학생으로 TOPIK 3급 또는 IELTS 5.5이상인 자 * 이증언어과정 입학자 제외	수업료의 10%	입학·재학 학기중 1회 한정	석·박사 학위과정 (이증언어과정 제외)
SGU연계장학금 (Bridge Scholarship)	외국인학생으로 본교 학부, 석사과정 또는 어학당 수료 후 대학원진학자		입학금 면제	입학 학기	석·박사 학위과정

※ 정원의 외국인전담학과의 수업연한 단기과정(1년·4학기제)은 장학금 지급 대상에서 제외함

※ 본교 장학금 규정에 따라 신입생 장학금 지급을 지급하며, 상기 장학제도는 변경될 수 있음

장학금 제도 (奨学金制度) – SGU 장학금

재학생 : 학부/대학원 공통

[SGU 글로벌 서비스 장학금(Global Service Scholarships)]

장학금 종류	기준	금액	적용기간
SGU - 근로 장학금 (Student Assistant Scholarship)	[조건 : 직전 학기 GPA 4.0 이상, 출석률 95% 이상, 한국어능력 3급 이상] 국제교류처 근무, 외국인학생 관리 및 지원 보조	근무시간 및 업무 범위에 따른 시급제 지급	매월
SGU - 공헌 장학금 (Campus Ambassador Scholarship)	국제교류-홍보통번역봉사활동 등 학과 공헌활동 우수자	학기당 활동 실적(증빙·성과 평가)에 따라 10~100만원	학기당
SGU - 생활리더 장학금 (Life Leader Scholarship)	기숙사 총장 점호·생활관리 책임자	20만원	매월
SGU - 희망나눔장학금 (Hope & Sharing Scholarship)	경제적 여건이 어려우면서도 학업 성적과 생활 태도가 우수한 외국인 유학생으로, 국제교류처의 추천을 받은 자	30~100만원 이내	지자체·사회단체·기부재원 등 외부 기준에 따라 비정기 지급

기숙사
Dormitory
宿舎

기숙사 소개 (Dormitory) (宿舍介绍)

A pleasant dormitory with hotel-style facilities and a stable living environment centered on a room for two Person

Categories	Note
Capacity	454 Students
Room type	Double/ Quardable
Indoor Furniture	airconditioner, bed ,desk, chair, closet, etc
Facilities	Wireless Internet (Wi-fi), shower room, washroom, laundry room, lounge, Convenience store, library, etc
Fees(6 Months)	1,200,000 won (6 months, 1 semester) Food expenses not included

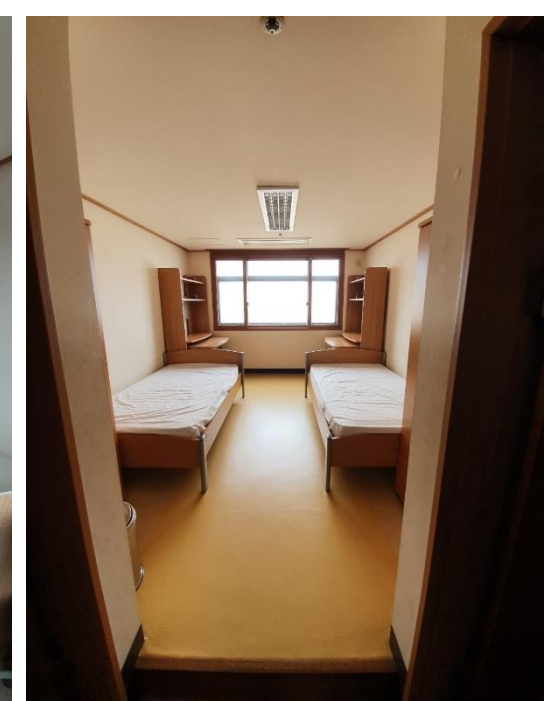
※ Students admitted to Global Language Institute are required to join the dormitory for one year after entering the school, and those admitted to undergraduate and graduate schools are required to join the dormitory for six months after entering the school.

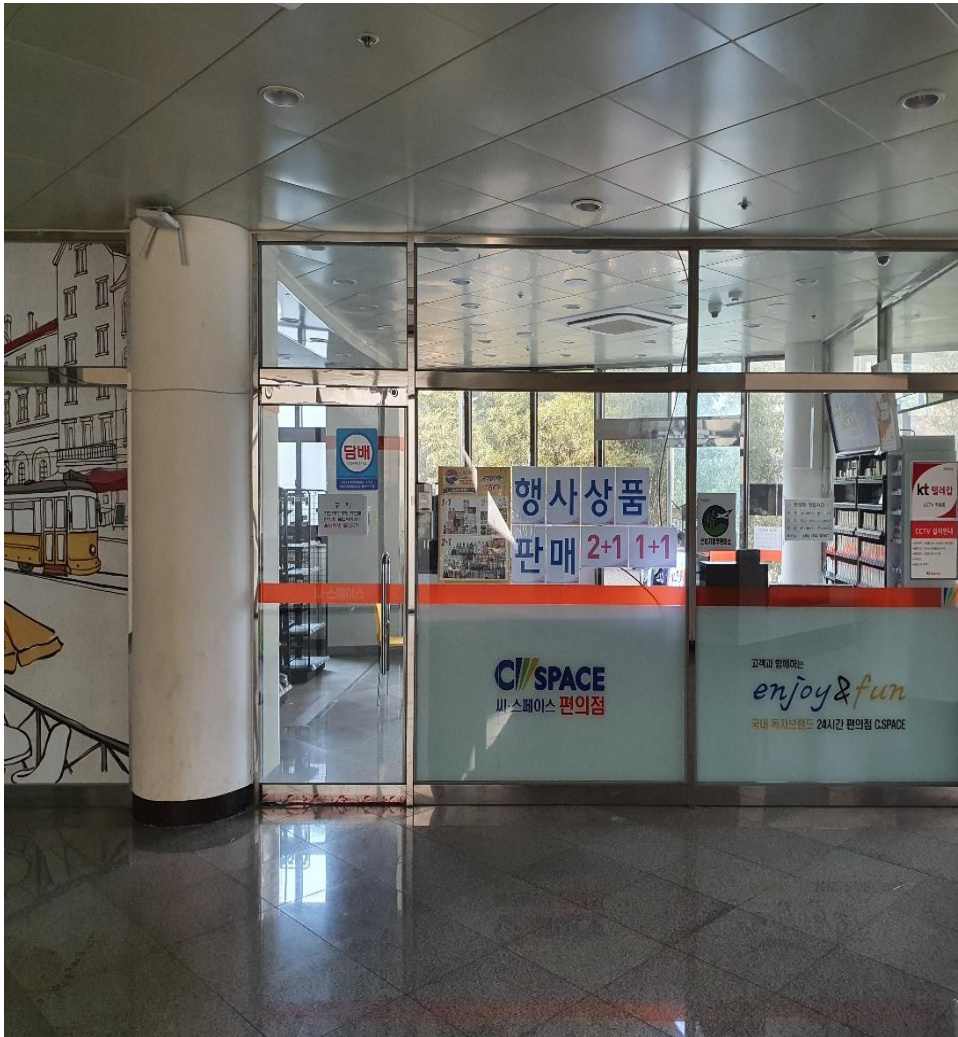
※The above amount is based on the management expenses for using the dormitory, and the dormitory expenses are subject to change depending on the increase etc.

※ The dormitory room shall be randomly assigned by the school, and for other details, please contact the operating room of the dormitory (054-770-9900)

It's a room for two with a high preference for international students
a comfortable living environment

Complete with individual toilets and showers





Additional facilities: Convenience store, lounge, laundry room

지원 일정 및 방법
Schedule and method of application
申请日程及方法

지원일정 (申請日程) - 1차 모집

구 분	일정	비고
원서접수 및 서류제출	2026. 04. 13.(월) ~ 04. 30.(목) 17:00까지	국제교류처(마감일 도착분에 한함)
합격자 발표	2026. 05. 12.(화)	개별통지, 합격통지서 교부
합격자 등록	2026. 05. 14.(목) ~ 05. 28.(목)	지정은행, 본교재무회계팀 납부 기간내 미납부시 불합격 처리됨
오리엔테이션	추후 안내	
개 강	2026. 08. 31.(월) 예정	

※ 전형일정은 대학 정책에 따라 변동될 수 있으며, 변동 시 학교 홈페이지에 사전 공지함

신경주대학교 한국어능력시험(SU-TOPIK) : 2026.05.08(금) 14:00

Support method and cost(申请方式及费用)

지원 방법(申请方式)	지원 비용(报名费用)	입금 계좌(汇款账户)
1. Completion and submission of application form (Application form: University website)	지원비(Application Fee) Undergraduate : 80,000 원 대학원 : 150,000 원	은행(Bank) : 대구은행(IM BANK) 계좌번호(Account No.) : 504-10-134249-6 예금주(Account Holder) : 신경주대학교(SINGYEONGJU UNIVERSITY)
2. 지원비 및 시험료 납부	SU-TOPIK 시험료(Test Fee) 50,000 원	
3. Submission of documents (Office of International Exchange)		

※ Note: All expenses will be processed after confirmation of the deposit, and support may be canceled if payment is not made within the deadline.

지원 서류
application documents
申请材料



지원서류 목록 (list of application documents)

공통 서류	신입학	편입학
<p>Applications for admission to Singyeongju University (original)</p> <p>Evidence of language proficiency (original) : Select 1 from the following items: New Entry and Transfer (Korean Track) Korean Language Proficiency Test (TOPIK) transcript, Singyeongju University Korean Language Proficiency Test pass, Sejong Institute Korean language completion certificate, social integration program education certificate or pre-evaluation grade certificate New admission and transfer (English track): English proficiency test transcript (IELTS 5.5 or higher)</p> <p>Applicant (International) Passport Copy (Part 1) Father/mother (international) copies of passports (one copy each) - If you don't have a passport, you can submit an ID card issued by your country Family relationship certificate or birth certificate (1 copy of translation notarization) Applicants with Chinese nationality can submit "copy of household register (if parents and applicants are not separated)" Parent's income certificate or tax payment certificate</p> <p>Bank balance certificate (one original copy of KRW 16 million or more in the name of the person or parent) It must be a certificate issued within 30 days as of the time of document submission. Balance certificates with expiration dates specified are only recognized for up to 6 months from the date of issuance If the applicant is a student (language trainee, exchange student, etc.) enrolled in Singyeongju University, he/she may submit a balance certificate of the domestic bank with a deposit of 8,000,000 won or more for one month</p> <p>3 color proof photos (photo for passport, 35×45 mm)</p>	<p>학부 : High school graduation (scheduled) certificate (1 original copy, notarized translation) - Compulsory certification of academic background with Apostille or consular verification</p> <p>Transcript of all high school grades (original part 1, notarized translation) - Compulsory certification of academic background with Apostille or consular verification</p> <p>대학원 : Certificate of Final Academic Graduation (scheduled) (1 original copy, notarized translation) - Compulsory certification of academic background with Apostille or consular verification - From a Chinese school: 学 Trust 网 Issuance Certification Report</p> <p>Final Certificate of Education (Original Part 1, Notarized Translation) - Compulsory certification of academic background with Apostille or consular verification - If a person from a Chinese school cannot obtain a transcript from a 学 trust 网, an apostille certification is required</p>	<p>학부 : Certificate of university education (graduation/scheduled/c completed) (original copy) - Compulsory certification of academic background with Apostille or consular verification</p> <p>Certificate of transcript for all grades in college (original part 1) - Grades per subject and white literature grade must be marked</p>

지원서류 관련 유의사항

- ※ All documents can be submitted within six months from the date of application receipt, and the original document must be submitted before the standard admission certificate is issued
- ※ All foreign language documents must be notarized in Korean or English translation
- ※ In the case of prospective graduates, the certificate of graduation can be replaced with a certificate of enrollment and a certificate of expected graduation, and the certificate of graduation and final transcript must be submitted before admission. If not submitted, the pass is canceled
- ※ Applicants for transferring to a four-year university must submit additional certificates of completion and enrollment certificates
- ※ If it is confirmed that the document has been passed by fraudulent means, such as forgery and alteration of submitted documents, the acceptance and admission are canceled
- ※ In principle, documents shall be submitted in the original, and all submitted documents shall not be returned
- ※ If additional confirmation of other qualifications is required, additional documents may be requested

중국 국적 지원자

▶ 고등학교 졸업(예정) 증명서 및 대학 학력(졸업, 졸업예정, 수료) 증명서 : 중국 교육부 학력인정증명서 발급사이트에서 발급한 졸업인정서 원본으로 제출 가능(**www.cdgdc.edu.cn** 또는 **<http://www.chsi.com.cn>**)

○ 지원서 제출

1) E-mail: gsson@gu.ac.kr

2) Mail-in:

Office of International Affairs, Singyeongju University
516 Taejong-ro, Gyeongju-si, Gyeongsangbuk-do,
(Postal Code : 38063), Republic of Korea

TEL : +82-54-770-3561~2 (Mon-Fri, 9am-5:30 pm KST)

FAX : +82-54-770-3565

시간제 취업

Part-time employment

合法打工

Standard for part-time employment (part-time employment)

Language Trainee (D4)

If the attendance rate is over 90%

Those who have completed TOPIK Level 2 or higher or Level 3 of the Social Integration Program (KIIP)

→ Part-time work available 25 hours a week, no time limit for weekends and vacations

Full-time International Student (D2)

Average C grade (2.0) or higher for the previous semester

Undergraduate grades 1-2: TOPIK level 3 or higher

Undergraduate grades 3-4 & graduate school: TOPIK level 4 or higher

→ The higher the TOPIK rating, the greater the number of working hours and the greater the number of areas available for employment

언어능력 수준별 아르바이트 가능 시간

구분	학년	한국어능력 (TOPIK, KIIP)		아르바이트 시작 시점	허용 시간	
					주중	주말·방학
한국어연수(D4)	x	Level2	x	6개월 후	10시간	
			○		25시간	
학부과정(D2-2)	1-2학년	Level3	x	즉시 가능	10시간	
			○		25시간	무제한
	3-4학년	Level4	x		10시간	
			○		25시간	무제한
대학원 (D2-3 / D2-4)	x	level4	x	10시간		
			○	30시간	무제한	

School Location

- **From Incheon Airport** : take a limousine bus bound for Gyeongju, transfer to #50, #51, #70 at Gyeongju Express Bus Terminal and get off at Entrance to Singyeongju University
- **From Gimhae Airport** : free pickup available on pre-booking
- **From Singyeongju KTX Train Station** : take bus #50, #51, #70 and get off at Entrance to Singyeongju University





천년고도 경주, 세계적 문화와 관광도시 신경주대학교로 오세요

Gyeongju, the city of a thousand years

“一边学习一边合法工作，毕业后直接实习 → 求职签证 → 就业 → 长期居留。”

- ✓ “最快一年拿MBA，性价比最高。”
- ✓ “韩国制造业+AI中心=就业机会最多的地区。”
- ✓ “TOPIK4级=工作机会大幅增加。”
- ✓ “学校直接帮助学生对接企业实习与就业”